



Door / Drawer
Change Configuration Form
Extended Countertop Wall Cabinet - Two Drawers

Dealership Name _____

Date _____

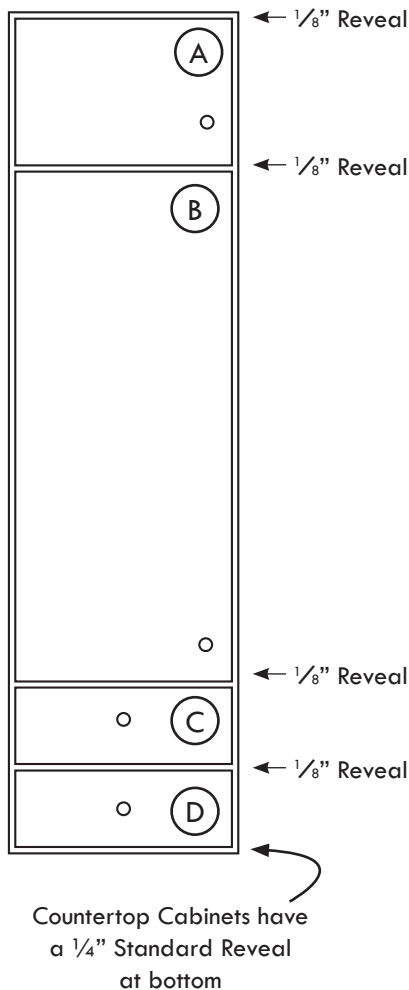
Designer Name _____

Phone _____

Designer Email _____

Project Name _____

Applies to Pricing Program Item #(s) _____



	Min Height	Max Height
Drawer Front	5.9375	24.75
Door	11.75	61.75

	Height
A	
B	
C	
D	

**Total Cabinet Height including
Standard Reveals**

"

Is this overall dimension correct?

☐ Yes

☐ No

- Five-Piece Doors over 42" tall will have a centered mid rail
- Changing Drawer Front Heights may result in automatic change in Drawer Box Height. (Maximum Drawer Box Height is 9.875" tall.)
- Five-Piece Drawer Fronts will always have a horizontal grain panel
- Five Piece Drawer Fronts over a height threshold have wider top and bottom rails like corresponding door style. See door section for additional notes.